

OptoLock® Bulkhead Feedthrough Adaptor



Datasheet



DESCRIPTION

Firecomms OptoLock® bulkhead feedthrough adaptor provides a simple way to reliably connect two bare simplex or duplex cable together to transmit data. The design incorporates high precision alignment sleeves for 1 mm POF core, allowing for improved reliability with repeatable connectivity. The adaptor can also be conveniently panel mounted, if required.



FEATURES

- For use with 2.2 mm POF with 1 mm core
- High precision alignment sleeve
- Low insertion loss with repeatable reconnection
- Compact and durable design
- Suitable for panel mounting
- RoHS compliant

Ordering Information

Part Number	Name	Description
FA-BFC-KXD	OptoLock® Adaptor	2.2 mm OptoLock® Bulkhead Feedthrough Adaptor

SPECIFICATIONS

Table 1

OptoLock® Bulkhead Feedthrough Adaptor Specifications

Parameter	Value	Unit
Insertion Loss (Typical)*	-3	dB
Mating Durability (500 times) *	≤ 0.5	dB
Operating Temperature Range	- 40 to + 75	°C
Storage Temperature Range	- 40 to + 85	°C

*NOTE: Values stated are attained using 650 nm, 2.2 mm fiber with a PE jacket and a 1 mm PMMA core

MECHANICAL DIMENSIONS

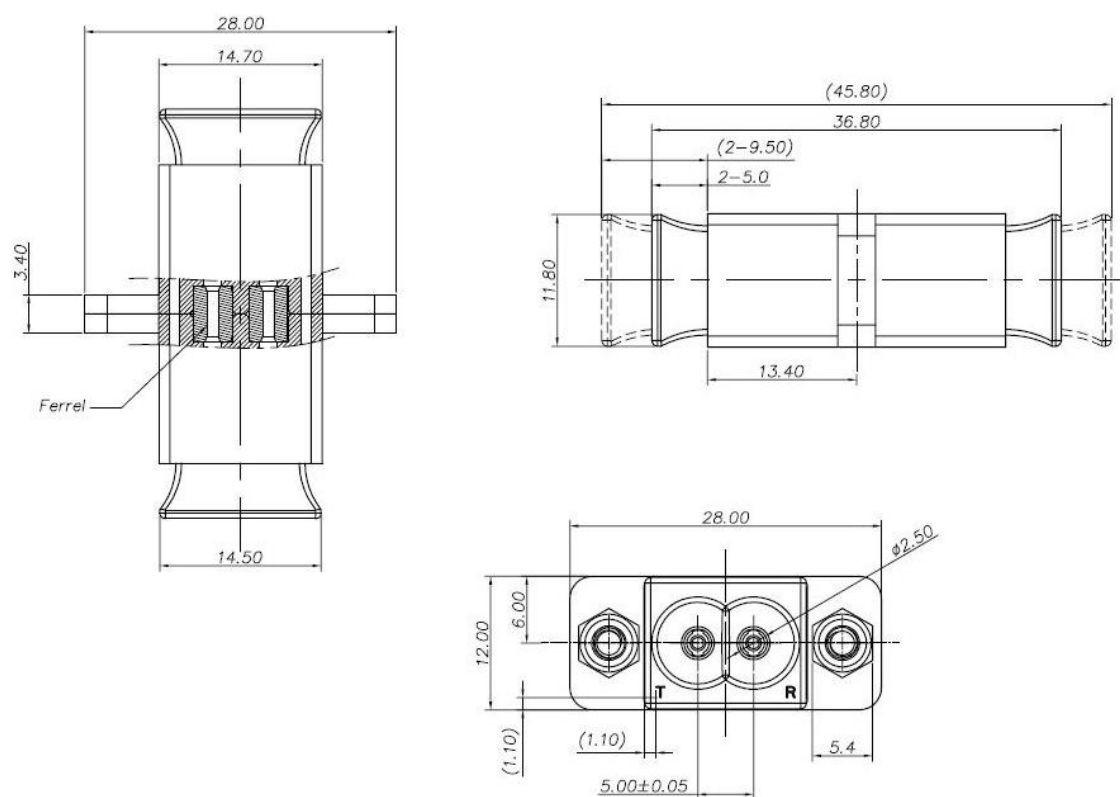


FIGURE 1

Mechanical dimensions of the OptoLock® Bulkhead Feedthrough Adaptor

NOTE: Thread Specification for mounting nuts is UNC#4-40

For the most recent revision or further information please visit www.firecomms.com or contact the company directly at the following address, Firecomms Ltd, 2200 Airport Business Park, Cork, IRELAND. Copyright© 2004-2023 Firecomms. All rights reserved. Firecomms refers to Firecomms Limited and/or its subsidiaries. Firecomms assumes no responsibility for inaccuracies or omissions in the information contained in this document. Specifications are subject to change without notice. No patent rights are granted to any of the circuits described here